

PARTS LIST

Fxj1070

HYDRAULIC BREAKER

APPLICABLE SERIAL NUMBER 0001 AND UP



SUPPLY PERIOD OF SPARE PARTS FOR FURUKAWA ROCK DRILL CO., LTD. PRODUCTS

Thank you for purchasing a Furukawa Rock Drill Co., Ltd. product.

Please note that the supply of spare parts of Furukawa Rock Drill Co., Ltd. products will be assured for 10 years after the termination of production in accordance with the guidelines for the supply of spare parts as specified by the Japan Construction Equipment Manufacturers Association.

Although the supply of spare parts is terminated in principle at the maturity of the subject supply period, we may be able to supply them upon request even after the expiration of supply period on condition that the delivery date and price are subject to negotiation.

Even if it is within the supply period, however, the delivery date, price, etc. may be subject to negotiation when it is difficult to keep stocks should the purchased parts are not available because the manufacturer does not produce them anymore. If you may have any questions about any particular model subject to the warranty as stated above and the time limit of spare parts supply, please contact the FRD Europe B.V. distributor in your area.

USING THE PARTS LIST

1. This parts list describes the components of a hydraulic breaker.
2. When ordering a part, refer to the illustrations and lists in this parts list and then inform the FRD Europe B.V. distributor in your area of the following items.
 - (1) Model name
 - (2) Serial No.
 - (3) Part No.
 - (4) Part name
 - (5) Quantity
3. Use "Genuine Furukawa Rock Drill Parts" when replacing all parts.
4. The illustrations in this parts list show the positions and shapes of the parts so that a user can order a part without any problem.

Do not repair a hydraulic breaker by using this parts list.
5. The parts in this list are subject to change for improvement without notice on the part of the manufacturer.

How to use the parts list

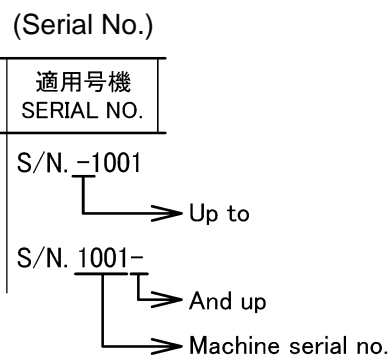
(1) Illustration

- ① Group Name.....It is the same as the Group Name on the CONTENTS.
- ② Fig. No.....It shows the illustration number and corresponds to Fig. No. of the parts breakdown.
- ③ ItemIt corresponds to Item on the parts breakdown.
- ④ Group Name.....It shows the group name in which the parts breakdown is covered separate page in this parts list.
- ⑤ Page.....The left side of “—” (hyphen) shows consecutive numbers in each unit. The right side shows consecutive numbers of drawings/lists in each unit.

(2) Parts Breakdown

- ① ItemIt is shown by three figures and corresponds to Item in the illustration. Item nos. are not always in sequence.
When a part has been changed in design and then the part number or quantity has been changed, a sub-number is added to Item in order to show the order of change.
- ② Part No.(a) Part number is shown.
(b) Indication of a no-service part
With parts which cannot be serviced as a single part, only the illustrations and part names are given and the mark * is shown in the part number column. These parts are serviced as an assembly, a kit or a set.
- ③ Part NameIt shows the description of a part. When following marks are put before the part name.
No mark Represents a single part or an assembly component.
* Represents a part or an assembled part of the assembly component. It is listed out after the assembly name.
** Represents a part of the assembled part of the assembly component.
- ④ Q' tyAs a rule, this column indicates the quantity of a part required for one breaker. In case of a part of an assembly component, however, it indicates the quantity of the part required for one assembly component. In this column, the following mark is also used besides the Arabic numerals to indicate the quantity of parts.
() Parenthesis..... This part is not included in an assembly. •••Option etc.
AR As required.

⑤ Serial No. Serial No. in which this part is used is as shown in the following example:



⑥ Remarks The marks and part numbers in the Remarks column are described below.

A..... Replaceable common part and following part no.

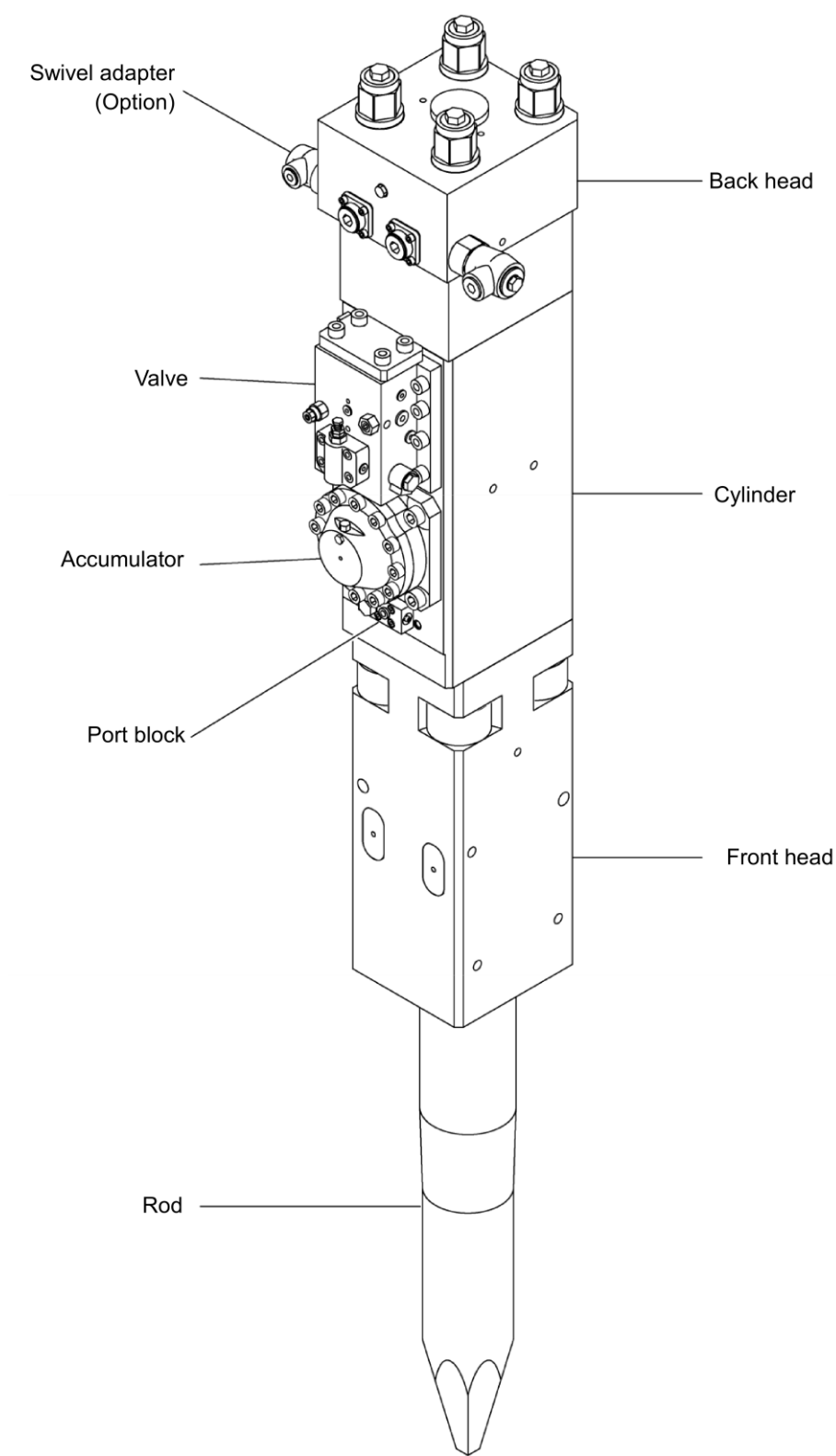
B..... Represents that this part is not supplied as a single part, however, it is supplied as a set.
Refer to Replaceable Part List at the end of the parts list.

C Represents that this part is not supplied as a single part.
When an assembly including this part is supplied, the parts after this mark are supplied. When no parts are given after this mark, the components of this part are supplied.

D This part is no longer manufactured due to an incorrect part number or a change and supplying this part is discontinued. When a substitute can be supplied, the part after this mark is supplied.

⑦ Page..... The left side of “—” (hyphen) shows consecutive numbers in each unit.
The right side shows consecutive numbers of drawings/lists in each unit.

Name of Components or Component Group



CONTENTS

FIG.NO.	GROUP NAME	PAGE
902412-010010	BREAKER BODY UNIT	01-01
902412-920020	SEAL KIT (A) (CYLINDER GROUP)	02-01
902412-920030	SEAL KIT (B) (CYLINDER, BACK HEAD GROUP)	03-01
902412-130010	VALVE	04-01
902412-700010	ACCUMULATOR	05-01
902412-920040	SEAL KIT (C) (VALVE, ACCUMULATOR GROUP)	06-01
902409-340010	SWIVEL ADAPTER (OPTION)	07-01
902409-920080	SEAL KIT (D) (SWIVEL ADAPTER GROUP)	08-01
902407-920090	SEAL KIT (E) (PRESSURE CONTROL GROUP)	09-01
	GREASE HOSE ASSEMBLY	10-01
902412-880020	SV-BOX	11-01
	HYDRAULIC HOSE ASSEMBLY	12-01
	STICKERS	13-01
902412-900010	STANDAARD TOOLS	14-01
	BACK HEAD NITROGEN CHARGING KIT	15-01
	ACCUMULATOR NITROGEN CHARGING KIT	16-01

SERVICE MEMO

Lined area for writing the service memo.

ITEM	PART NO.	PART NAME	Q'TY	REMARKS
101	002412-100010	CYLINDER	1	
A01	*	*CYLINDER	1	
A02	HB15G-10104	HELI-COIL INSERT	8	
A03	HB40G-10104	HELI-COIL INSERT	4	
102	002412-100030	CYLINDER LINER	1	
103	002412-100040	DUST SEAL	1	R1
104	002412-100050	U PACKING	1	R1
105	002412-100060	BUFFER RING	1	R1
106	002412-100070	STATIC SEAL	9	R1
107	002412-100080	DISTANCE WASHER	1	
108	002412-100090	SEAL RETAINER	1	
109	002412-100100	ROD SEAL	1	R1
110	002412-100110	ROD SEAL	1	R1
111	002412-100120	ROD SEAL	1	R1
112	002412-100130	PLUG	1	
113	HB100G-10121	BUSH	2	R1
114	001300-20118	KNOCK PIN	1	
115	161011-00045	O-RING	3	R1
116	084896-02000	PLUG	4	
117	160011-00011	O-RING	4	R2
118	084896-04000	PLUG	1	
119	160011-00018	O-RING	1	R2
120	084896-03000	PLUG	1	
121	160011-00014	O-RING	1	R2
151	002412-110010	PISTON	1	
181	HB100G-20121	CHECK VALVE	1	R2
182	002410-120020	MANIFOLD BLOCK	1	
183	000500-220110	SPRING WASHER	6	
184	102032-14045	SOCKET BOLT	6	
185e	002407-120030	CAP	1	
E01	161011-00024	*O-RING	1	R2
186	084896-04000	PLUG	1	
187	001100-20123	GREASE NIPPLE	1	
301b	002412-200010	FRONT HEAD	1	
B01d	*	*FRONT HEAD	1	
D01	*	**FRONT HEAD	1	

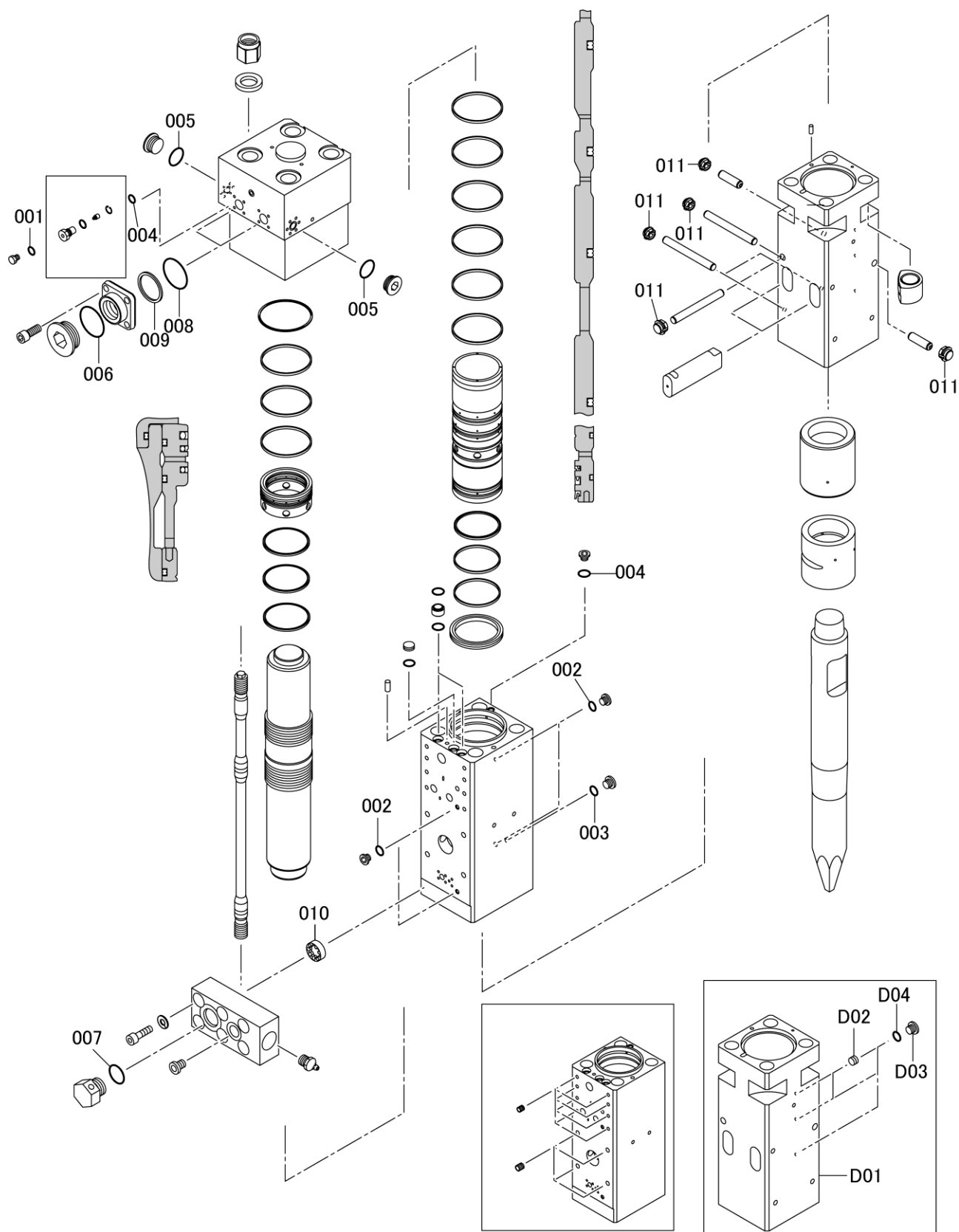
ITEM	PART NO.	PART NAME	Q'TY	REMARKS
D02	HD190-02024	**REDUCER	2	R2
D03	084896-03000	**PLUG	3	
D04	160011-00014	**O-RING	3	
B02	002412-200040	*FRONT HOLDER	1	
B03	002412-200050	*FRONT BUSH	1	
302	002412-200060	ROD PIN	2	R2
303	002410-200070	PLUG	6	
304	002412-200070	STOP PIN	4	
305	001300-20118	KNOCK PIN	1	
306	002412-200080	STOP PIN	2	
381	002412-250010	MOIL POINT ROD	1	
381	002412-250020	FLAT POINT ROD	1	
381	002412-250030	WEDGE POINT ROD	1	
381	002412-250040	BALL POINT ROD	1	
401	002412-300010	BACK HEAD	1	
402c	HB15G-30103	CHARGING VALVE	1	
C01	HB15G-30104	*VALVE BODY	1	
C02	HB15G-30105	*VALVE	1	
C03	264020-00012	*SNAP RING	1	
C04	161011-00004	*O-RING	1	
403	HB20G-30109	PLUG	1	R2
404	160011-00006	O-RING	1	
405	160011-00018	O-RING	1	
406	161011-00045	O-RING	2	
407	002412-300020	STATIC SEAL	1	
408	084896-10000	PLUG	2	R2
409	160011-00029	O-RING	2	
410	HB40G-30302	FLANGE ADAPTER	2	
411	102033-14035	SOCKET BOLT	8	
412	161025-00045	O-RING	2	
413	262022-00045	BACKUP RING	2	R2
414	084896-12000	PLUG	2	
415	160011-00038	O-RING	2	
451	002412-360010	THROUGH BOLT	4	
452	002412-360021	NUT	4	
453	002412-360040	NUT	4	
454	002412-360050	WASHER	4	

SERVICE MEMO

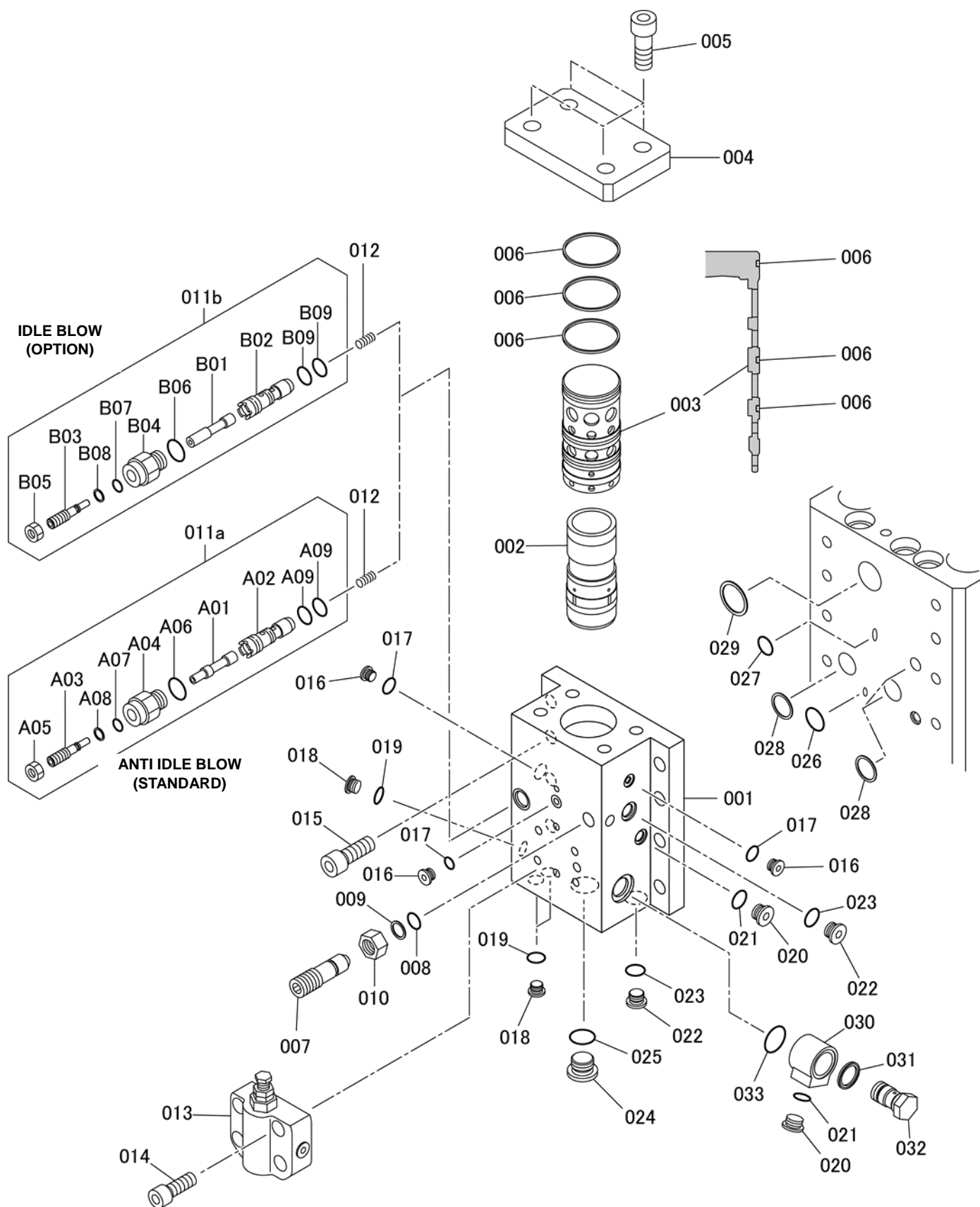
Lined area for writing the service memo.

ITEM	PART NO.	PART NAME	Q'TY	REMARKS
	902412-920020	SEAL KIT (A)		FOR CYLINDER GROUP
001	002412-100040	DUST SEAL	1	
002	002412-100050	U PACKING	1	
003	002412-100060	BUFFER RING	1	
004	002412-100070	STATIC SEAL	9	
005	002412-100100	ROD SEAL	1	
006	002412-100110	ROD SEAL	1	
007	002412-100120	ROD SEAL	1	
008	002412-300020	STATIC SEAL	1	
009	HB100G-10121	BUSH	2	
010	161011-00045	O-RING	5	

902412-920030 SEAL KIT (B) (CYLINDER, BACK HEAD GROUP)



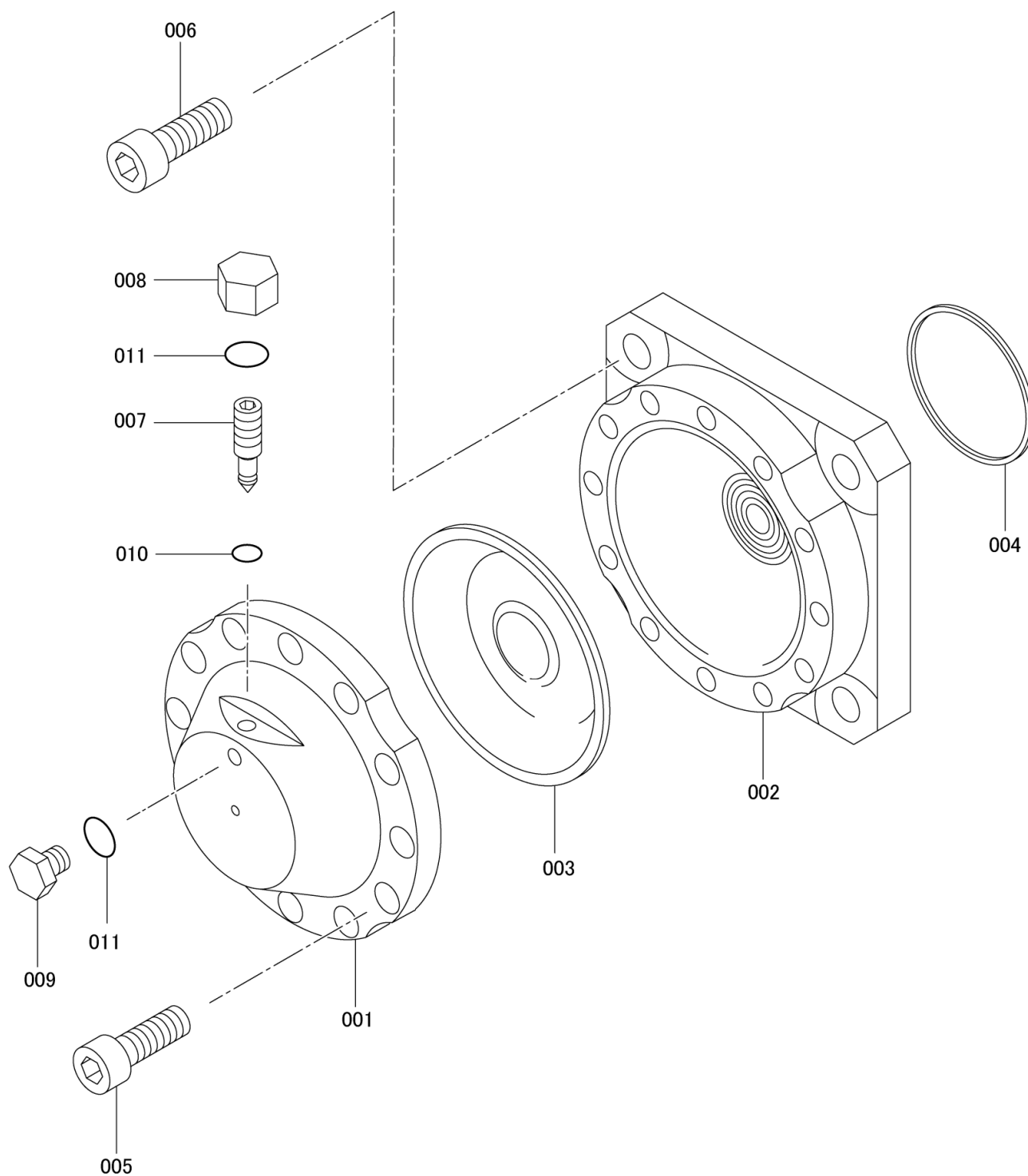
ITEM	PART NO.	PART NAME	Q'TY	REMARKS
	902412-920030	SEAL KIT (B)		FOR CYLINDER, BACK HEAD
001	160011-00006	O-RING	1	
002	160011-00011	O-RING	4	
003	160011-00014	O-RING	4	
004	160011-00018	O-RING	2	
005	160011-00029	O-RING	2	
006	160011-00038	O-RING	2	
007	161011-00024	O-RING	1	
008	161025-00045	O-RING	2	
009	262022-00045	O-RING	2	
010	HB100G-20121	CHECK VALVE	1	
011	002410-200070	PLUG	6	



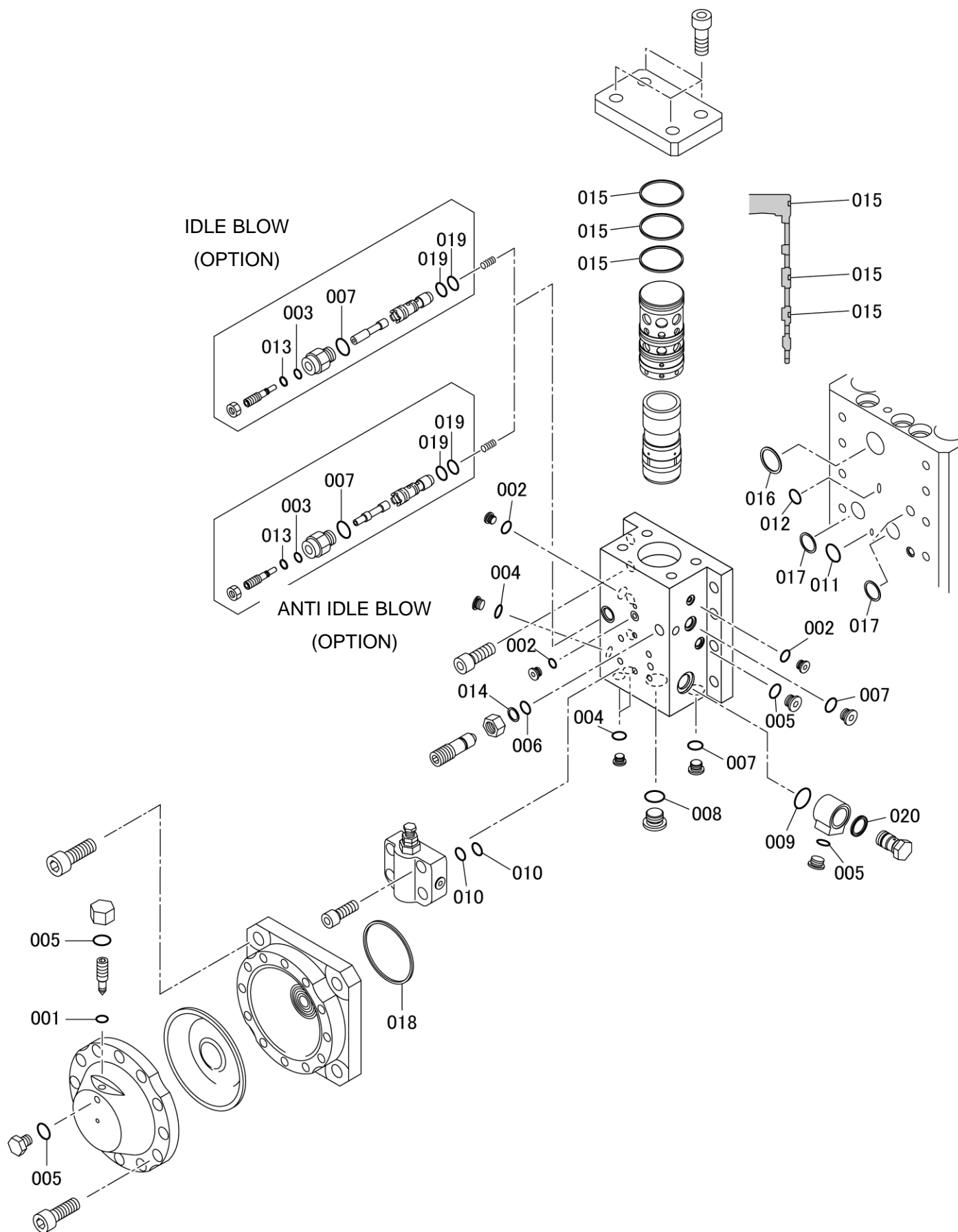
ITEM	PART NO.	PART NAME	Q'TY	REMARKS
001	902412-130010	VALVE ASSEMBLY		
002	002412-130010	*VALVE HOUSING	1	
003	002412-130020	*VALVE	1	
004	002412-130030	*VALVE RETAINER	1	
005	002412-130040	*VALVE HOUSING COVER	1	
006	HB20G-13106	*SOCKET BOLT	4	
007	002412-130050	*STATIC SEAL	3	R3
008	002412-130060	*VALVE ADJUSTER	1	
009	160011-00018	*O-RING	1	R3
010	262021-00018	*BACK-UP RING	1	R3
011a	120133-27000	*NUT	1	
A01	002410-130060	*STROKE ADJUSTER	1	ANTI IDLE BLOW
A02	002410-130080	**PLUNGER	1	
A03	002410-130090	**BODY	1	
A04	002410-130100	**SCREW	1	
A05	F22-13123	**STROKE PLUG	1	
A06	120133-16000	**NUT	1	
A07	160011-00024	**O-RING	1	R3
A08	160011-00009	**O-RING	1	R3
A09	262021-00009	**BACK-UP RING	1	R3
011b	F22-13522	**DUAL SEAL	2	R3
B01	002410-130110	*STROKE ADJUSTER	1	IDLE BLOW
B02	002410-130070	**PLUNGER	1	
B03	002410-130090	**BODY	1	
B04	002410-130100	**SCREW	1	
B05	F22-13123	**STROKE PLUG	1	
B06	120133-16000	**NUT	1	
B07	160011-00024	**O-RING	1	R3
B08	160011-00009	**O-RING	1	R3
B09	262021-00009	**BACK-UP RING	1	R3
012	F22-13522	**DUAL SEAL	2	R3
013	F22-13124	*SPRING	1	
014	002408-130060	*PRESSURE CONTOROL VALVE	1	
015	102033-16040	*SOCKET BOLT	4	
016	102032-24060	*SOCKET BOLT	8	
017	084896-01000	*PLUG	3	
018	160011-00008	*O-RING	3	R3

SERVICE MEMO

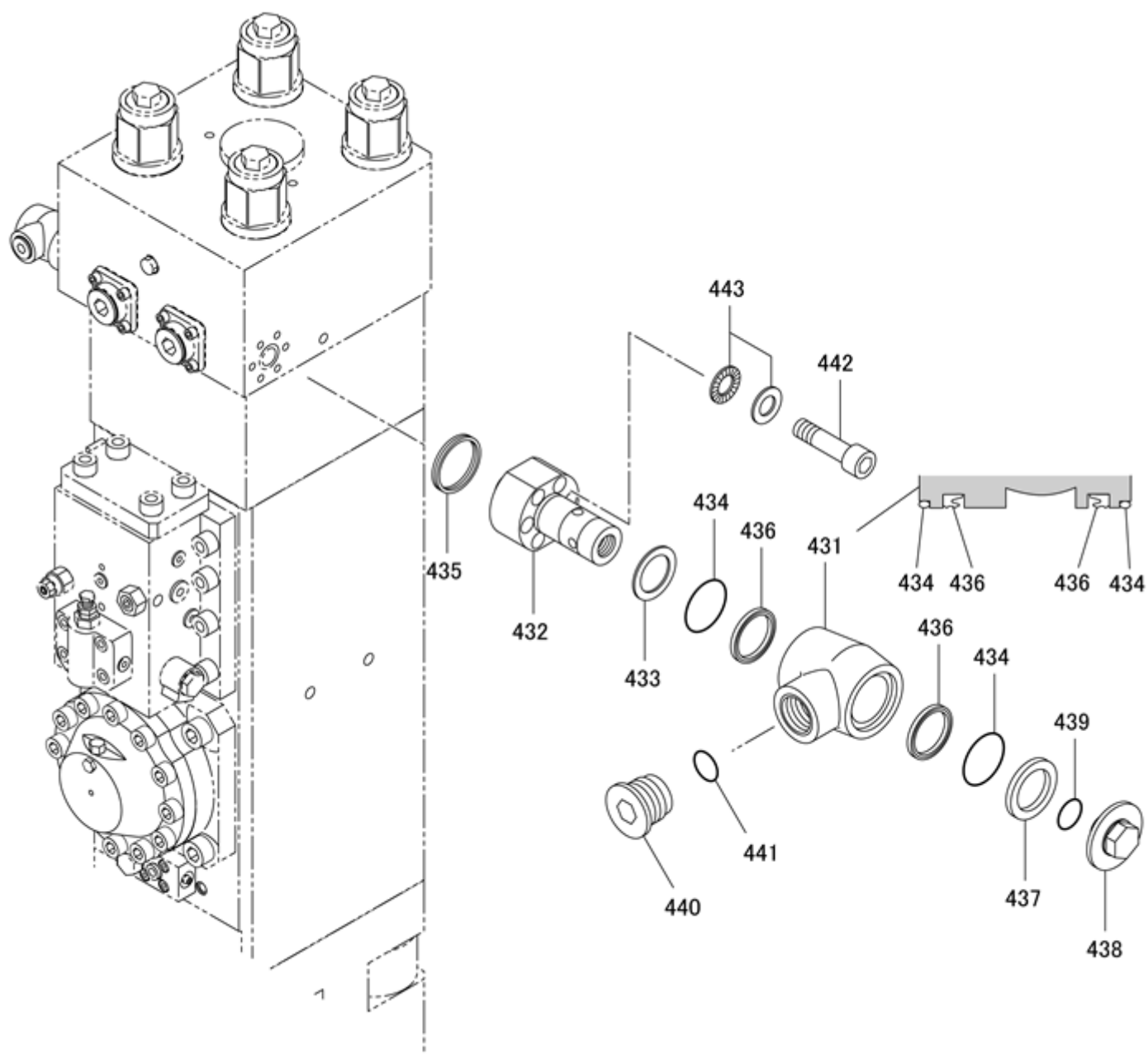
Form with horizontal lines for writing.



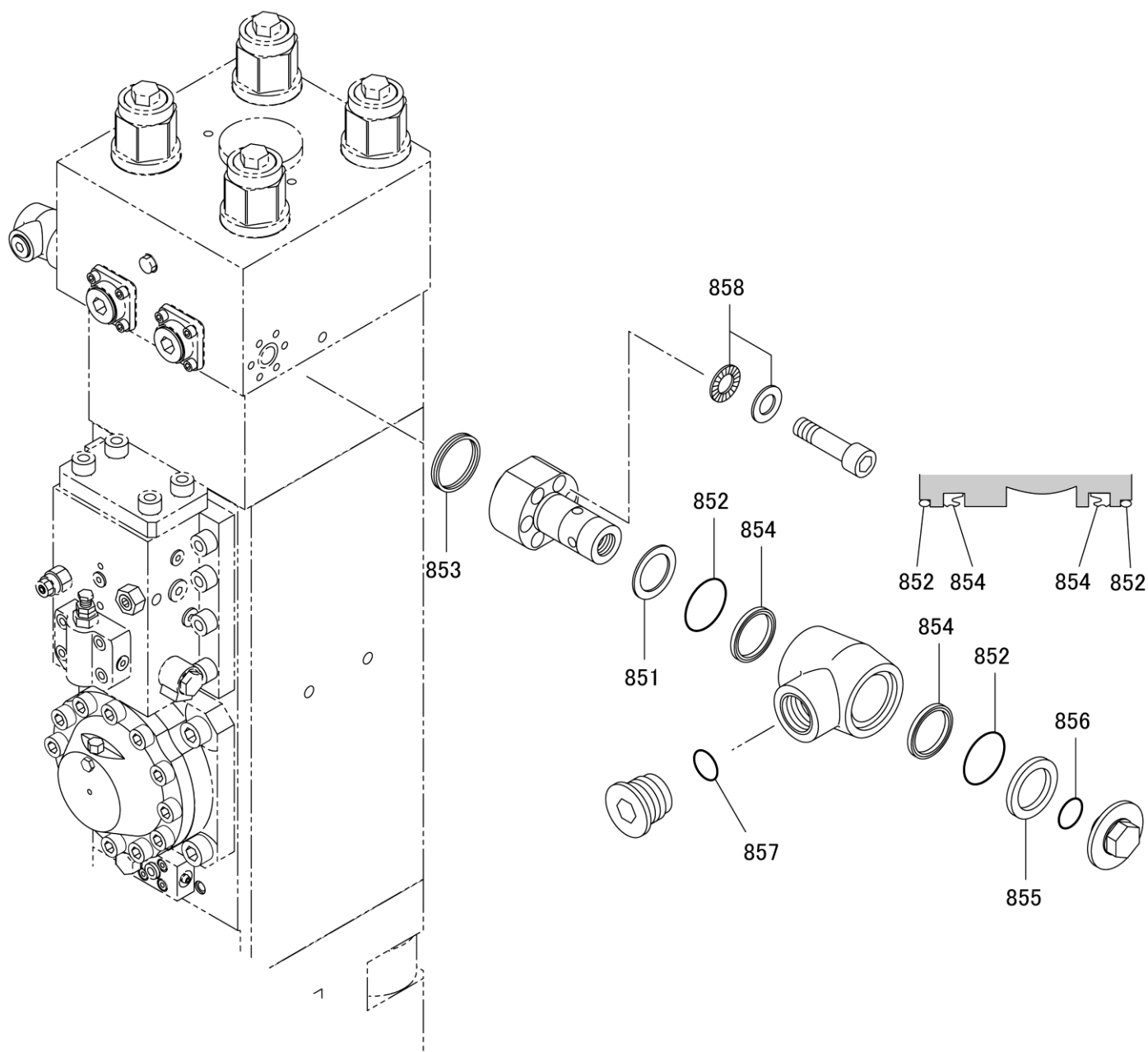
ITEM	PART NO.	PART NAME	Q'TY	REMARKS
001	902412-700010	ACCUMULATOR ASSEMBLY		
002	HB50G-70101	*ACCUMULATOR COVER	1	
003	002412-700010	*ACCUMULATOR BODY	1	
004	HB50G-70111	*DIAPHRAGM	1	
005	002412-700040	*STATIC SEAL	1	R3
006	HB20G-13106	*SOCKET BOLT	12	
007	002412-700030	*SOCKET BOLT	4	
008	007120-70134	*VALVE	1	
009	007010-70029	*CAP	1	
010	007010-70030	*PLUG	1	
011	160011-00005	*O-RING	1	R3
	160011-00014	*O-RING	2	R3



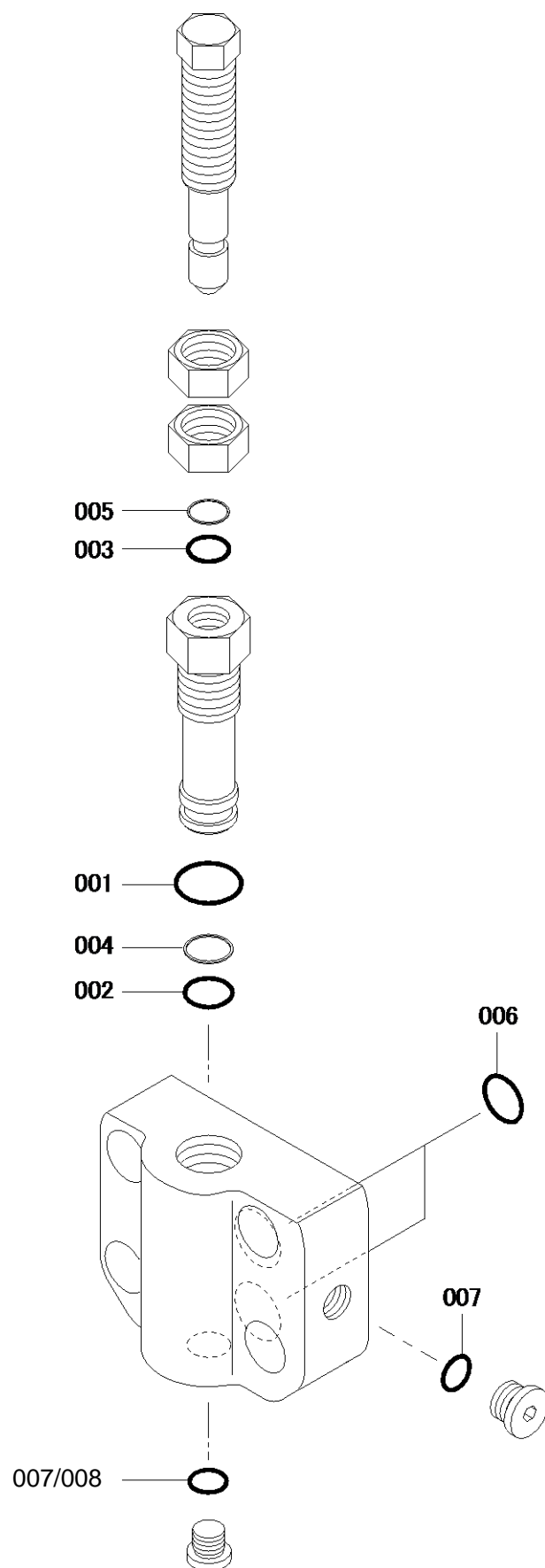
ITEM	PART NO.	PART NAME	Q'TY	REMARKS
001	902412-920040	SEAL KIT(C)	1	FOR VALVE,ACCUMULATOR GROUP
002	160011-00005	*O-RING	3	
003	160011-00008	*O-RING	1	
004	160011-00009	*O-RING	3	
005	160011-00011	*O-RING	4	
006	160011-00014	*O-RING	1	
007	160011-00018	*O-RING	3	
008	160011-00024	*O-RING	1	
009	160011-00029	*O-RING	1	
010	161011-00038	*O-RING	2	
011	161025-00025	*O-RING	1	
012	161025-00030	*O-RING	1	
013	161025-00040	*O-RING	1	
014	262021-00009	*BACKUP RING	1	
015	262021-00018	*BACKUP RING	3	
016	002412-130050	*STATIC SEAL	1	
017	002412-130070	*STATIC SEAL	3	
018	002412-130080	*STATIC SEAL	1	
019	002412-700040	*STATIC SEAL	2	
020	F22-13522	*DUAL SEAL	1	
	002410-950020	*SEALING WASHER		



ITEM	PART NO.	PART NAME	Q'TY	REMARKS
	902409-340010	SWIVEL ADAPTER ASSEMBLY		
431	002409-340010	*SWIVEL BODY	1	
432	002409-340020	*SWIVEL ADAPTER	1	
433	F45-34304	*SPACER (A)	1	R4
434	160021-00055	*O-RING	2	R4
435	002409-340030	*DUAL SEAL	1	R4
436	F45-34306	*U-PACKING	2	R4
437	F45-34305	*SPACER (B)	1	R4
438	F45-34203	*PLUG	1	
439	160011-00029	*O-RING	1	R4
440	084891-12000	*PLUG	1	
441	160011-00038	*O-RING	1	R4
442	102033-14065	*SOCKET BOLT	6	
443	F45-34308	*NORD-LOCK WASHER	6	R4

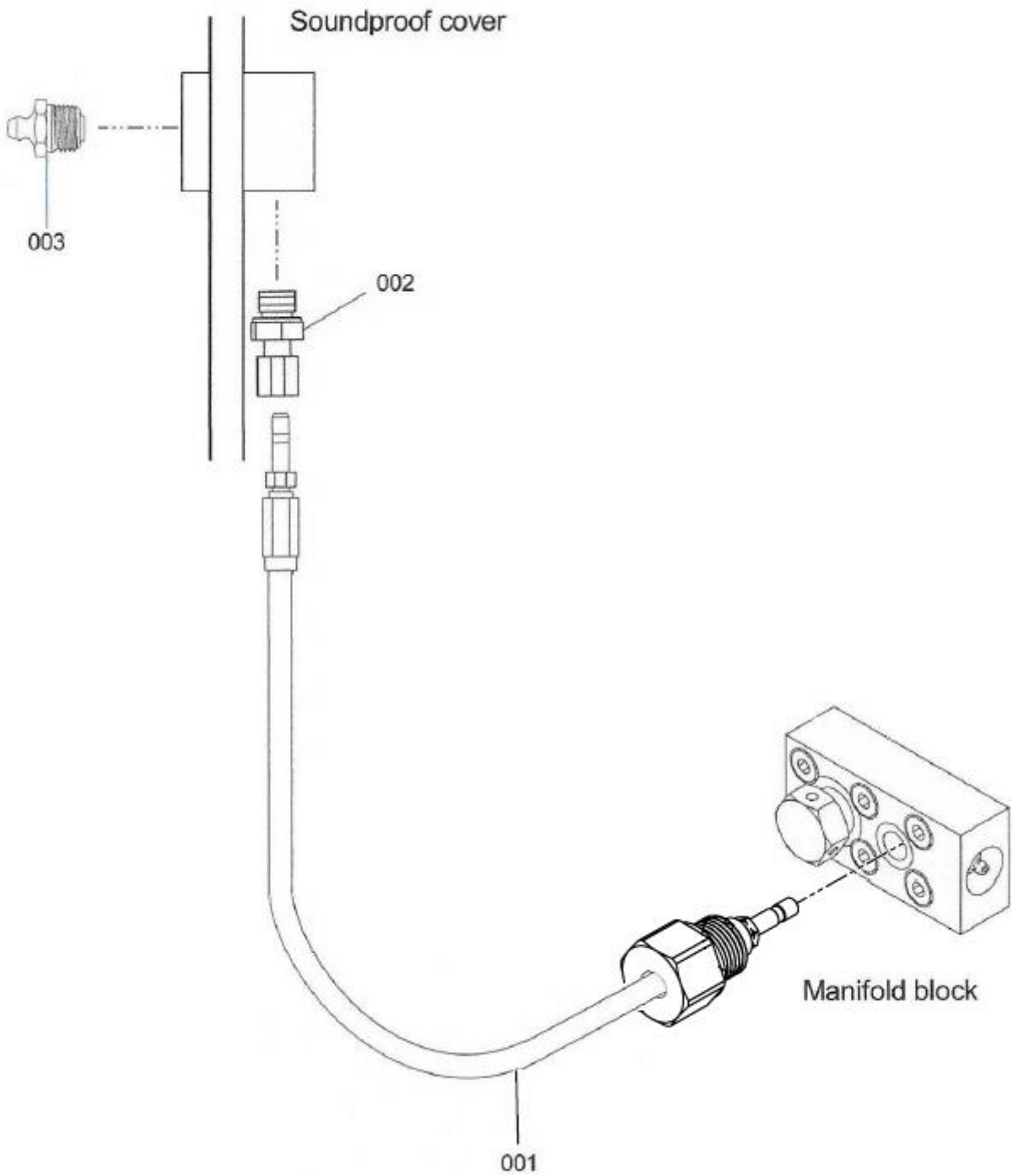


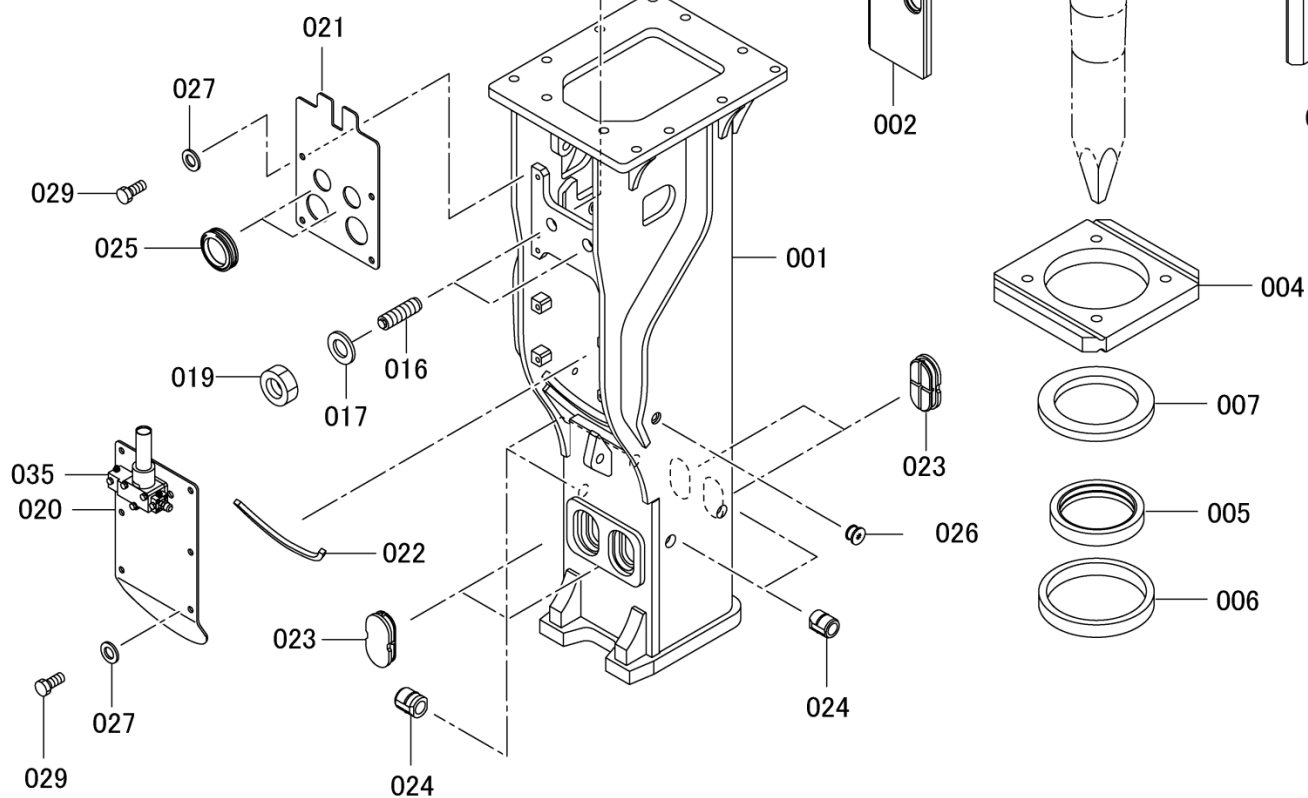
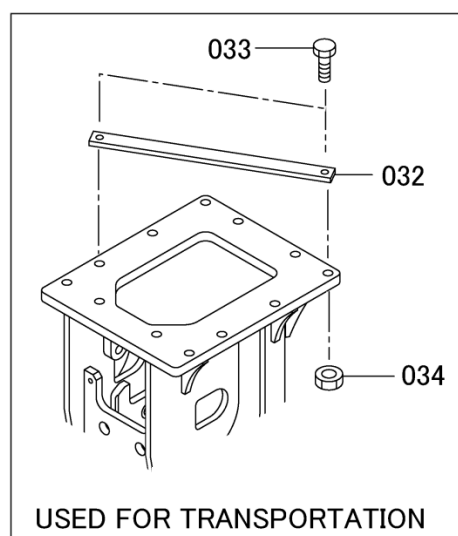
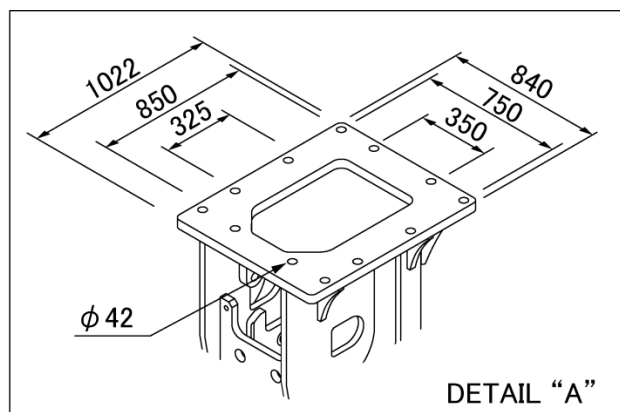
ITEM	PART NO.	PART NAME	Q'TY	REMARKS
	902409-920080	SEAL KIT(D)		
851	F45-34304	*SPACER (A)	2	
852	160021-00055	*O-RING	4	
853	002409-340030	*DUAL SEAL	2	
854	F45-34306	*U-PACKING	4	
855	F45-34305	*SPACER (B)	2	
856	160011-00029	*O-RING	2	
857	160011-00038	*O-RING	2	
858	F45-34308	*NORD-LOCK WASHER	12	



ITEM	PART NO.	PART NAME	Q'TY	REMARKS
	902407-920090	SEAL KIT (E)		
001	161011-00024	*O-RING	1	
002	161011-00018	*O-RING	1	
003	161011-00009	*O-RING	1	
004	262021-00018	*BACK-UP RING	1	
005	262021-00009	*BACK-UP RING	1	
006	161025-00025	*O-RING	2	
007	161011-00014	*O-RING	2	
008	160011-00018	*O-RING	1	EU version

GREASE HOSE ASSEMBLY

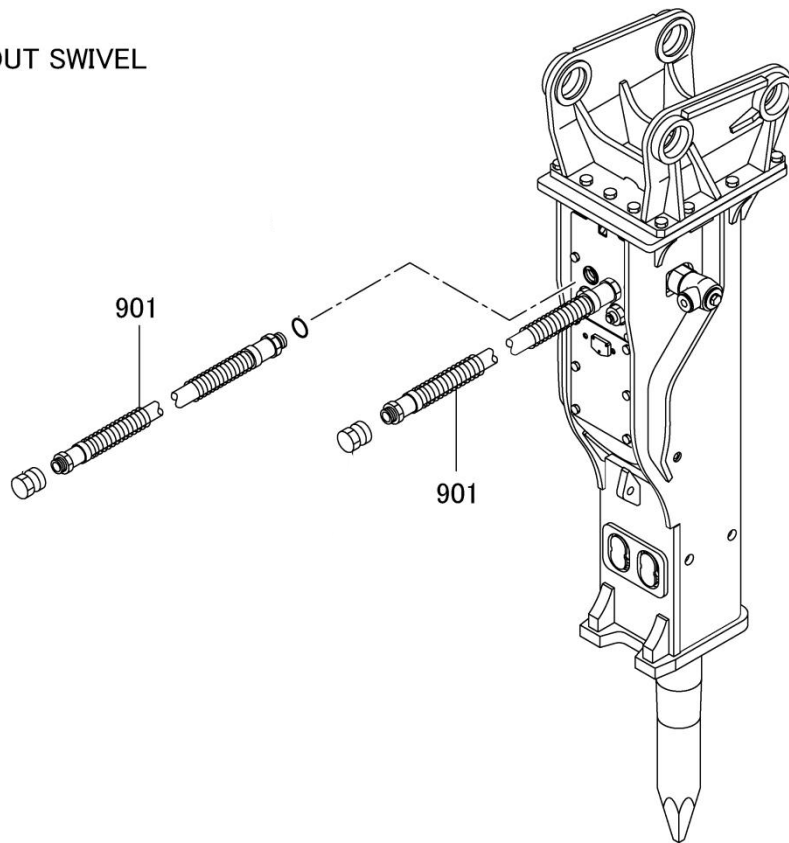




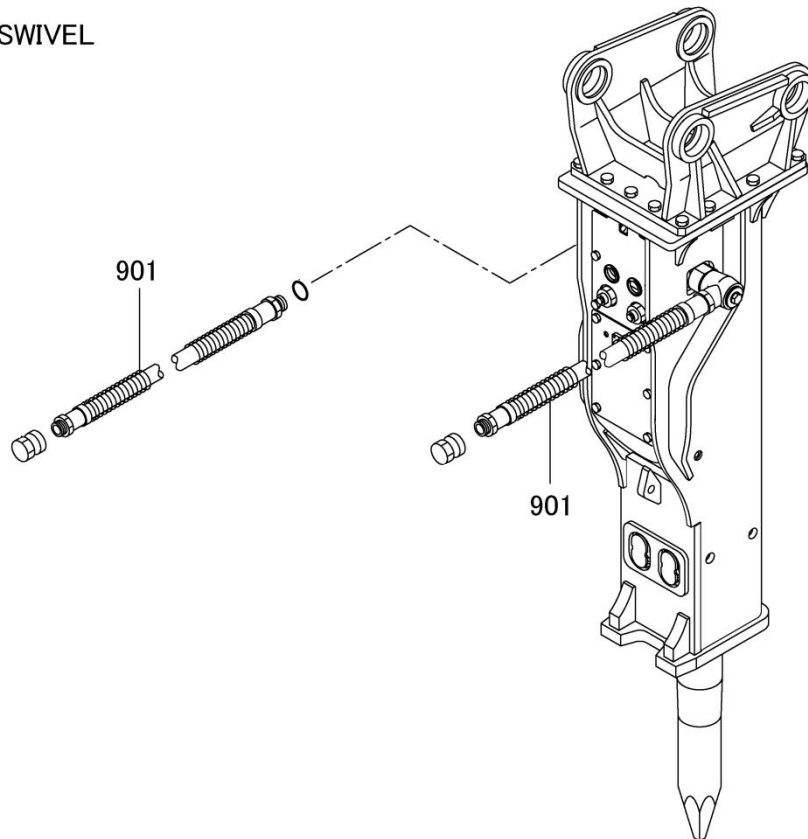
ITEM	PART NO.	PART NAME	Q'TY	REMARKS
001	002412-880010	SV-BOX	1	
002	002412-880020	FRONT DAMPER	2	
003	002412-880030	SIDE DAMPER	2	
004	002412-880040	SPACER	1	
005	002412-880050	PROTECT SEAL	1	
006	002412-880060	DUST PROTECTOR(A)	1	
007	002412-880070	DUST PROTECTOR(B)	1	
008	002412-880080	BACK DAMPER(A)	2	
009	002412-880090	BACK DAMPER(B)	1	
010	002412-880100	BACK DAMPER(C)	1	
011	002412-880110	TOP DAMPER	1	
012	002412-880120	TOP STOPPER	1	
013	002410-880240	BACK DAMPER(D)	1	
014	002410-880250	SPACER(A)	1	
015	002410-880210	SPACER(B)	1	
016	002410-880260	DAMPER ADJUSTER	2	
017	NORDLOCK56	NORD-LOCK	2	
019	122133-56000	NUT	2	
020	002412-880130	COVER(A)	1	
021	002412-880140	COVER(B)	1	
022	002412-880150	CUSHION	1	
023	002412-880160	PIN PLUG	4	
024	002410-880170	DUST PLUG	4	
025	F45-88505	GROMMET	2	
026	002410-880180	PLUG	1	
027	F5-81114E	NORD-LOCK	10	
029	101042-24060	BOLT	10	
032	002412-880170	BAR	1	TRANSPORT(WITHOUT TOP BRACKET)
033	101012-36100	BOLT	2	TRANSPORT(WITHOUT TOP BRACKET)
034	120112-36000	NUT	2	TRANSPORT(WITHOUT TOP BRACKET)
035	401020272	AUTOMATIC GREASE PUMP	1	

HYDRAULIC HOSE ASSEMBLY

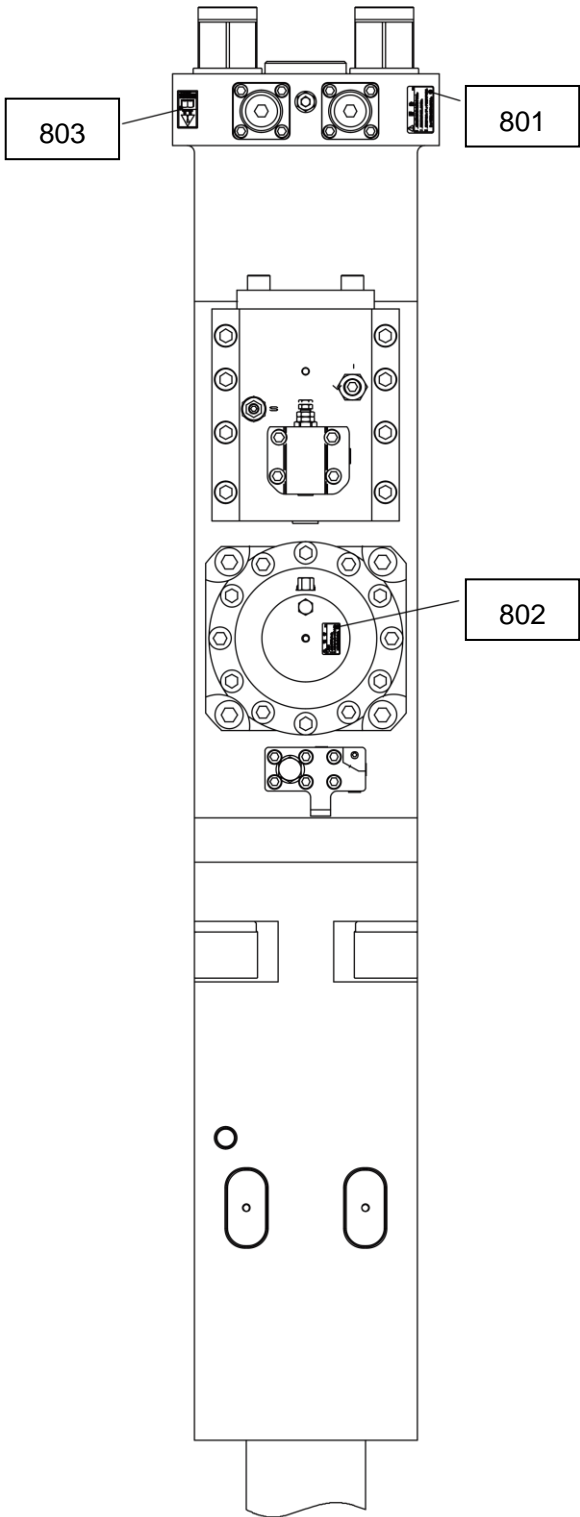
SV-BOX / WITHOUT SWIVEL



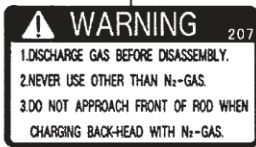
SV-BOX / WITH SWIVEL



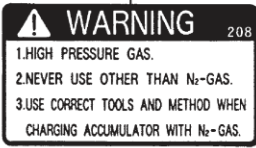
STICKERS



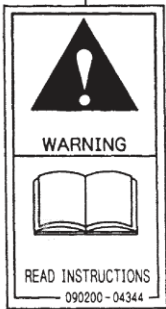
801



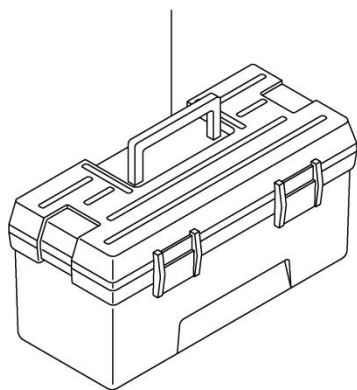
802



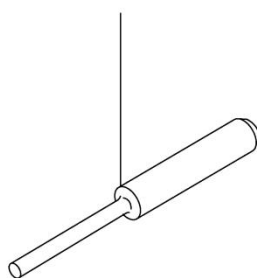
803



001



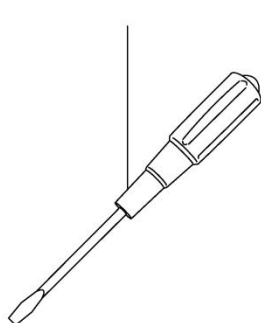
003



011 029



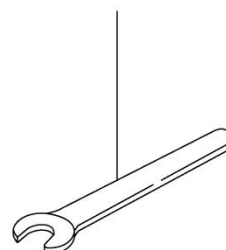
019



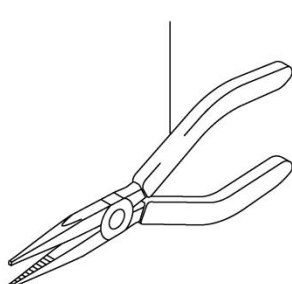
021



017 027 028

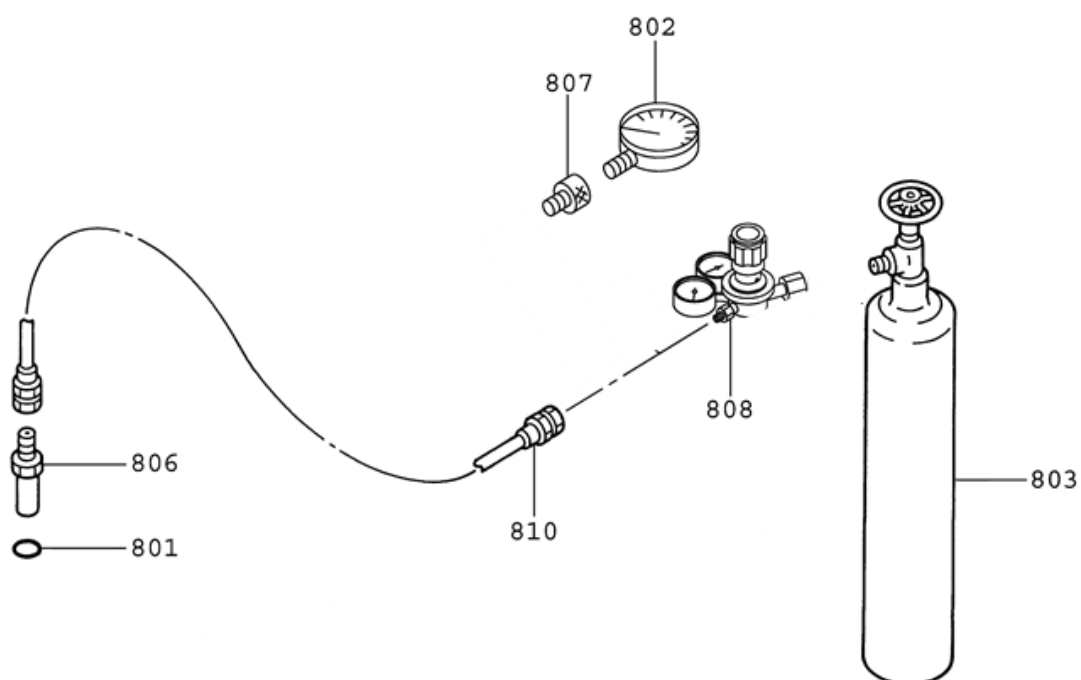


026



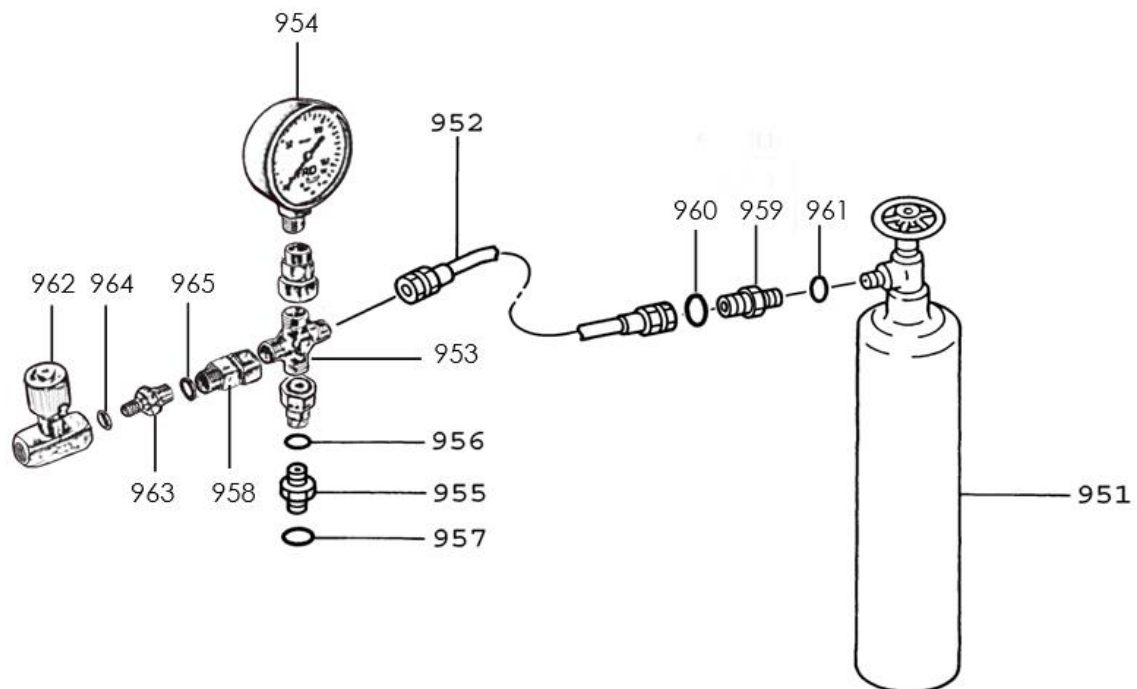
ITEM	PART NO.	PART NAME	Q'TY	REMARKS
001	090012-91016	TOOL BOX	1	
003	HB50G-90102	PRESS PIN	1	
011	102032-12050	SOCKET BOLT	1	
017	090012-11027	SPANNER	2	
019	090012-41009	SCREWDRIVER	1	
020	002412-900010	MODEL NAME STICKER	1	
021	002410-200070	PLUG	2	
026	090012-32001	PLIERS	1	
027	090012-11023	SPANNER	2	
028	090012-11026	SPANNER	1	
029	102032-12160	SOCKET BOLT	1	

BACK HEAD NITROGEN CHARGING KIT



ITEM	PART NO.	PART NAME	Q'TY	REMARKS
801	HB20G-920131 161011-00006	BACK HEAD CHARGING KIT O-RING	1	FOR: AUSTRIA, BULGARIA, CZECH REP., DENMARK, FINLAND, GERMANY, ICELAND, NETHERLANDS, NORWAY, POLAND, RUSSIA (MOSCOW), SERBIA, SLOVAKIA, SWEDEN, SWITZERLAND.
802	H-11016	PRESSURE GAUGE	1	
803	-	NITROGEN GAS CYLINDER	1	
806	HB20G-921071	CHARGING ADAPTER	1	
807	HB20G-921072	ADAPTER	1	
808	046012	REGULATOR (Ru-3)	1	
810	1001766	CHARGING HOSE	1	
801	HB20G-920132 161011-00006	BACK HEAD CHARGING KIT O-RING	1	FOR: FRANCE, PORTUGAL, SPAIN.
802	H-11016	PRESSURE GAUGE	1	
803	-	NITROGEN GAS CYLINDER	1	
806	HB20G-921071	CHARGING ADAPTER	1	
807	HB20G-921072	ADAPTER	1	
808	046016	REGULATOR (B-4)	1	
810	1001766	CHARGING HOSE	1	
801	HB20G-920133 161011-00006	BACK HEAD CHARGING KIT O-RING	1	FOR: GREAT BRITAIN, IRELAND MALTA, SOUTH AFRICA.
802	H-11016	PRESSURE GAUGE	1	
803	-	NITROGEN GAS CYLINDER	1	
806	HB20G-921071	CHARGING ADAPTER	1	
807	HB20G-921072	ADAPTER	1	
808	046017	REGULATOR (Ri-2)	1	
810	1001766	CHARGING HOSE	1	
	2243-04-06	CONNECTOR	1	
801	HB20G-920134 161011-00006	BACK HEAD CHARGING KIT O-RING	1	FOR: BELGIUM, CYPRUS, GREECE, HUNGARY, ISRAEL, ITALY, RUSSIA (GENERAL) UKRAINE.
802	H-11016	PRESSURE GAUGE	1	
803	-	NITROGEN GAS CYLINDER	1	
806	HB20G-921071	CHARGING ADAPTER	1	
807	HB20G-921072	ADAPTER	1	
808	046018	REGULATOR (Ru-1)	1	
810	1001766	CHARGING HOSE	1	

ACCUMULATOR NITROGEN CHARGING KIT



ITEM	PART NO.	PART NAME	Q'TY	REMARKS
951	HB20G-920041	ACCUMULATOR CHARGING KIT		FOR: AUSTRIA, BULGARIA,
952	-	NITROGEN GAS CYLINDER	1	CZECH REP., DENMARK,
953	1001813	CHARGING HOSE	1	FINLAND, GERMANY, ICELAND,
954	K12L	CROSS	1	NETHERLANDS, NORWAY,
955	H-11160	PRESSURE GAUGE	1	POLAND, RUSSIA (MOSCOW),
956	007320-90031B	ADAPTER	1	SERBIA, SLOVAKIA, SWEDEN,
957	160011-00006	O-RING	1	SWITZERLAND.
958	160011-00014	O-RING	1	
959	MAVE12LR	CONNECTOR	3	
960	620201000	VALVE	1	
961	2244-02-04	CONNECTOR	1	
962	5161-02	O-RING	1	
963	5161-04	O-RING	1	
951	HB20G-920042	ACCUMULATOR CHARGING KIT		FOR: GREAT BRITAIN,
952	-	NITROGEN GAS CYLINDER	1	IRELAND, MALTA,
953	1001813	CHARGING HOSE	1	SOUTH AFRICA.
954	K12L	CROSS	1	
955	H-11160	PRESSURE GAUGE	1	
956	007320-90031B	ADAPTER	1	
957	160011-00006L	O-RING	1	
958	160011-00014	O-RING	1	
959	MAVE12LR	CONNECTOR	3	
960	A-265434	CYLINDER ADAPTER	1	
961	A-264341	DELRIN RING	1	
962	620201000	VALVE	1	
963	2244-02-04	CONNECTOR	1	
964	5161-02	O-RING	1	
965	5161-04	O-RING	1	
951	HB20G-920043	ACCUMULATOR CHARGING KIT		FOR: BELGIUM, CYPRUS,
952	-	NITROGEN GAS CYLINDER	1	FRANCE, GREECE, HUNGARY,
953	1001813	CHARGING HOSE	1	ITALY, PORTUGAL,
954	K12L	CROSS	1	RUSSIA (GENERAL), SPAIN,
955	H-11160	PRESSURE GAUGE	1	UKRAINE.
956	007320-90031B	ADAPTER	1	
957	160011-00006L	O-RING	1	
958	160011-00014	O-RING	1	
959	MAVE12LR	CONNECTOR	3	



FURUKAWA ROCK DRILL CO.,LTD.

5-3, 1-chome, Nihonbashi, Chuo-ku,
Tokyo, 103-0027, Japan.
Phone:81-3-3231-6982 Fax:81-3-3231-6994

Book No. : 902412-D101010-1EC

Date of Issue : November 2020